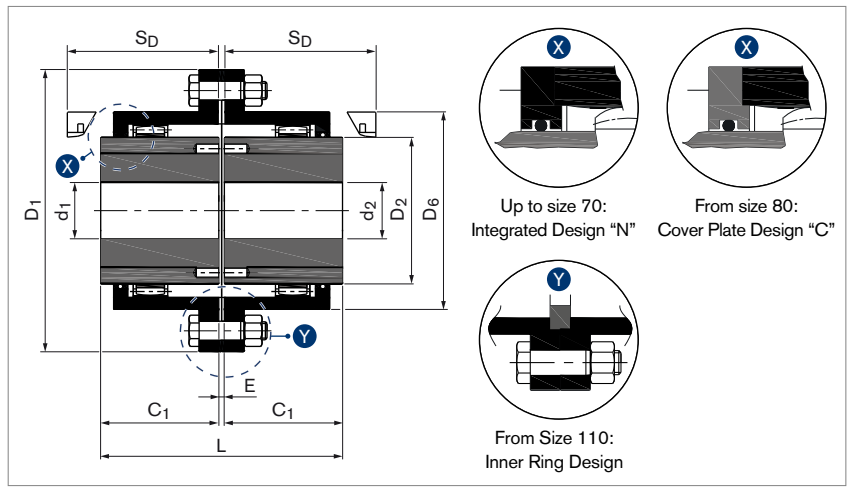
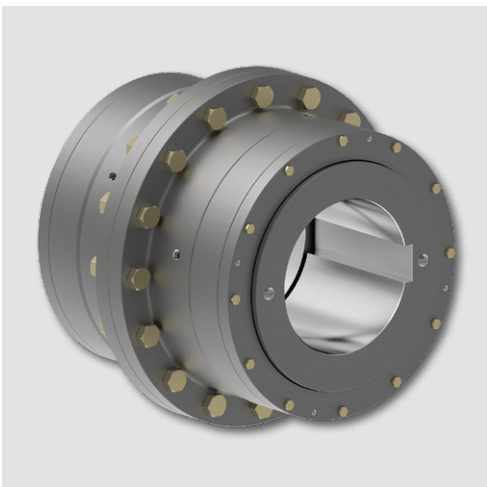


Gear Couplings

LOVEJOY INDIA® RLZ

AGMA Standard Design for High Torques with Straight Bores and Keyways, Either as Double Engagement (Type BCB/BNB) or Single Engagement (Type BCR/BNR)

RLZ BCB/BNB: Double Engagement with Two Geared Hubs (Full Flexible)



Size	T _{KN}	n _{max}	Bore Diameter		D ₁	D ₂	D ₆	E	S _D	C ₁	L	G _w	J	Max. Misalignment		
			Min. d ₁ /d ₂	Max. d ₁ /d ₂										ΔK _a	ΔK _w	ΔK _r
RLZ	Nm	1/min	mm	mm	mm	mm	mm	mm	mm	mm	mm	kg	kg-m ²	mm	degrees/gear mesh	mm
10	1337	8000	14	52	116	69	84	3	51	43	89	4.4	0.0052	±0.5	1.5°	0.6
15	2865	6500	22	65	152	86	107	3	61	50	103	9	0.0192			0.8
20	5061	5600	27	80	178	105	127	3	76	62	127	15	0.041			1.0
25	10027	5000	32	98	213	131	156	5	92	77	159	27	0.105			1.2
30	16043	4400	42	115	240	152	182	5	106	91	187	40	0.195			1.4
35	22059	3900	47	135	279	178	212	6	130	107	220	65	0.454			1.7
40	32086	3600	47	160	318	210	250	6	145	121	248	96	0.86			2.0
45	45073	3200	52	180	346	235	275	8	165	135	278	131	1.39	±1.0	2.1	
50	62070	2900	72	195	389	254	309	8	183	153	314	186	2.53		2.6	
55	84034	2650	72	215	425	279	334	8	203	168	344	247	3.83		2.9	
60	115069	2450	110	235	457	305	366	8	228	188	384	299	5.21	±2.0	3.2	
70	174084	2150	110	280	527	356	425	9	266	221	451	473	11		3.7	
80	252006	1750	110	285	590	385	485	10	300	249	508	682	20.72	±3.0	4.2	
90	290012	1550	150	300	660	420	535	13	325	276	565	898	34.95		4.8	
100	391521	1450	160	330	711	470	595	13	355	305	623	1242	55.95		5.5	
110	506113	1395	200	381	775	533	648	13	387	334	681	1621	84.81	±3.0	6.2	
120	687549	1300	230	432	838	572	715	13	415	356	725	2014	124.2		8.2	
130	773493	1075	260	482	911	630	812	19	463	410	839	2803	207.07		8.5	
140	993127	940	260	515	980	670	860	19	486	430	879	3316	277.64	8.9		
150	1155465	900	300	559	1029	725	908	19	518	450	919	3951	371.28	9.2		

To continue see next page

Gear Couplings LOVEJOY INDIA® RLZ

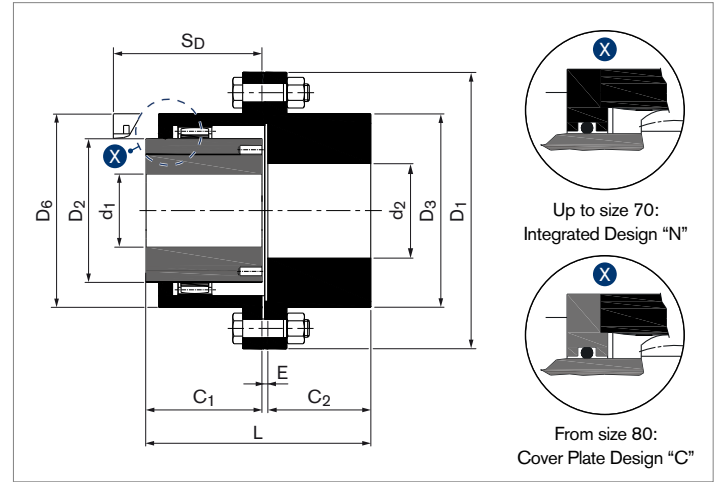
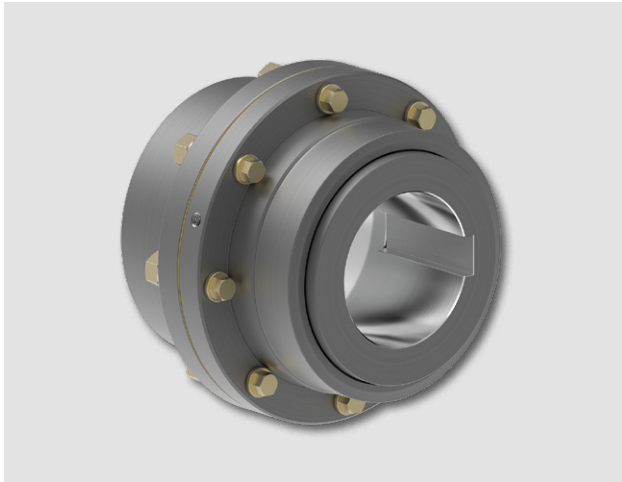
RLZ BCB/BNB: Double Engagement with Two Geared Hubs (Full Flexible)

		Dimensions in Case of Single/Double Reversed Hubs																			
Size	RLZ	10	15	20	25	30	35	40	45	50	55	60	70	80	90	100	110	120	130	140	150
E ₁	mm	7.5	16	14.5	19.5	25	33.5	42.5	47	55	71	68	80	80	92	113	82	98	92	101	131
L ₁	mm	93.5	116	138.5	137.5	207	247.5	284.5	317	361	407	444	522.5	578	644	723	750	810	912	961	1031
E ₂	mm	12	29	26	34	45	61	79	86	102	134	128	151	150	171	213	151	183	165	183	243
L ₂	mm	98	129	150	188	227	275	321	356	408	470	504	593	648	723	823	819	895	985	1043	1143

To continue see next page

Gear Couplings LOVEJOY INDIA® RLZ

RLZ BCR/BNR: Single Engagement with One Geared Hub (Half Flexible)



Size	TKN	n _{max}	Bore Diameter				D ₁	D ₂	D ₃	D ₆	E	C ₁ Flexible Hub	C ₂ Rigid Hub	S _D	L	Gw	J	Max. Misalignment	
			Min.		Max.													ΔK _a	ΔK _w
			d ₁ Flexible Hub	d ₂ Rigid Hub	d ₁ Flexible Hub	d ₂ Rigid Hub													
RLZ	Nm	1/min	mm	mm	mm	mm	mm	mm	mm	mm	mm	mm	mm	mm	kg	kg·m ²	mm	degrees/gear mesh	
10	1337	8000	14	18	52	60	116	69	84	4	43	40	51	87	4.5	0.0055	±0.25	1.5°	
15	2865	6500	22	26	65	80	152	86	107	4	50	47	61	101	9.5	0.0204			
20	5061	5600	27	30	80	90	178	105	130	4	62	59	76	125	15.5	0.0436			
25	10027	5000	32	37	98	110	213	131	157	5	77	74	92	156	27.5	0.111			
30	16043	4400	42	44	115	130	240	152	182	5	91	88	106	184	41.5	0.210			
35	22059	3900	47	52	135	150	279	178	212	6	107	102	130	215	67	0.477	±0.5		
40	32086	3600	47	52	160	180	318	210	250	8	121	116	145	245	100	0.92			
45	45073	3200	52	57	180	200	346	235	276	8	135	131	165	274	135	1.468			
50	62070	2900	72	77	195	220	389	254	309	9	153	148	183	310	195	2.73	±1.0		
55	84034	2650	72	77	215	240	425	279	334	9	168	173	203	350	261	4.20			
60	115069	2450	77	82	235	260	457	305	366	10	188	186	228	384	316	5.70	±1.5		
70	174084	2150	92	102	280	300	527	356	425	13	221	218	266	452	500	12.05			
80	252006	1750	95	105	285	335	590	385	470	13	249	249	300	511	715	21.77			
90	290012	1550	100	170	300	370	660	420	518	15	276	276	325	567	969	36.60	±1.5		
100	391521	1450	120	180	330	405	711	470	572	16	305	305	355	626	1259	56.27			
110	506113	1330	130	220	370	440	775	521	620	16	335	335	386	686	1677	90.06			

Dimensions in Case of Reversed Hub																		
Size	RLZ	10	15	20	25	30	35	40	45	50	55	60	70	80	90	100	110	
E ₁	mm	8.5	17	15.5	19.5	25	33.5	44.5	47	56	72	70	84	83	94	116	85	
L ₁	mm	91.5	114	136.5	170.5	204	242.5	281.5	313	357	413	444	523	581	646	726	755	

To continue see next page

Gear Couplings LOVEJOY INDIA® RLZ

Explanations

T_{KN} = Nom. Transmissible Torque	E₁ = Width of Gap Between Single Reversed Hubs	G_w = Approx. Weight
n_{max} = Max. Rotational Speed	E₂ = Width of Gap Between Double Reversed Hubs	J = Approx. Moment of Inertia
d₁/d₂ = Bore Diameter	C₁/C₂ = Guided Length in Bore Flexible Hub / Rigid Hub	ΔK_a = Max. Permissible Axial Misalignment
D₁ = Max. Outer Diameter	S_D = Disassembly Space	ΔK_w = Max. Permissible Angular Misalignment
D₂ = Outer Diameter Flexible Hub	L = Total Length	ΔK_r = Max. Permissible Radial Misalignment
D₃ = Outer Diameter Rigid Hub	L₁ = Total Length Single Reversed Hubs	
D₆ = Sleeve Diameter	L₂ = Total Length Double Reversed Hubs	
E = Width of Gap Between Hubs		

Technical Information

- Double Engagement Type: Compensates both angular and radial misalignments or a combination of both as well as end float without imposing axial loads on adjacent bearings.
- Single Engagement Type: Compensates both angular misalignments as well as end float without imposing axial loads on adjacent bearings.
- All dimensions are in millimeters, unless otherwise specified. Decimal points are used as decimal separators.
- Exposed bolt design allows for use of either open end or socket wrenches.
- Outer dimensions of flanges are rounded to the nearest figure.
- For operation at max. rotational speed n_{max} , dynamic balancing of the coupling is required. Please contact RINGFEDER POWER TRANSMISSION.
- Regarding couplings of larger sizes and vertical installation, please contact RINGFEDER POWER TRANSMISSION.
- Max. bore diameters specified above are applicable for uniformly loaded drives only. For non-uniformly loaded drives, please contact RINGFEDER POWER TRANSMISSION.
- If you need more detailed information about reversed hubs, please contact RINGFEDER POWER TRANSMISSION.
- RLZ Couplings are also available with various spacer options. Please contact RINGFEDER POWER TRANSMISSION for detailed information.
- For other types of shaft-hub-connections, please contact RINGFEDER POWER TRANSMISSION.
- For spare parts, we offer kits consisting of screws, nuts and gaskets.
- LOVEJOY INDIA® RLZ couplings meet the AGMA standard design.

Ordering example Double Engagement Type

Series	Type	Size	Hub Alignment	Bore Diameter d ₁	Bore Diameter d ₂
RLZ	BNB	55	E	110	135

Ordering example Single Engagement Type

Series	Type	Size	Hub Alignment	Bore Diameter d ₁	Bore Diameter d ₂
RLZ	BCR	80	E ₁	250	280

Ordering Information

- For integrated design, for sizes 70 and below, use letter "N" in the type. For cover plate design, for sizes 80 and up, use letter "C" in the type.
- Use letter "R" for rigid hubs and letter "B" for geared hubs in the type.
- Hub Alignment: E = No reversed hubs, E₁ = Single reversed hub, E₂ = Double reversed hubs
- Type Definition: Left Hub - Cover Plate Design - Right Hub
- Without further specifications, we deliver as standard: Bore tolerance H7; Keyway acc. to DIN 6885-1; Keyway width tolerance JS9; Set screw per hub. For bores complying with AGMA or other specifications, please contact RINGFEDER POWER TRANSMISSION.

Disclaimer of liability

All technical details and notes are non-binding and cannot be used as a basis for legal claims. The user is obligated to determine whether the represented products meet his requirements. We reserve the right to carry out modifications at any time in the interests of technical progress.