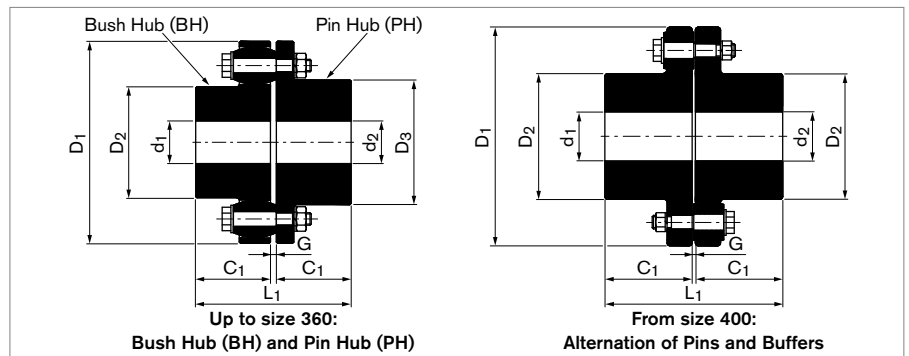


Pin & Bush Couplings

LOVEJOY INDIA® RLB

Standard Design with Straight Bores and Keyways (Type BWB), also available with Spacer (Type BSB)

RLB BWB: Type without Spacers

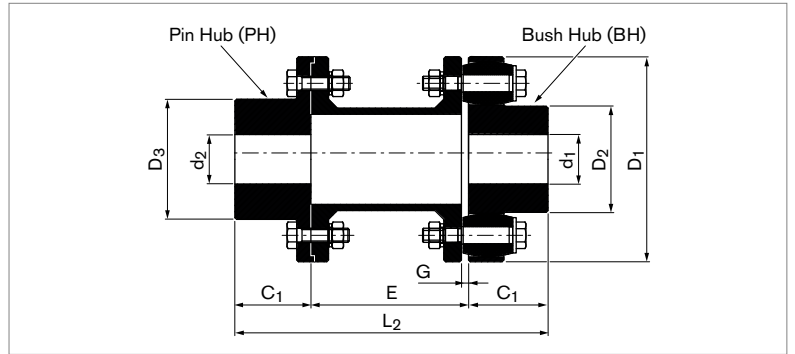
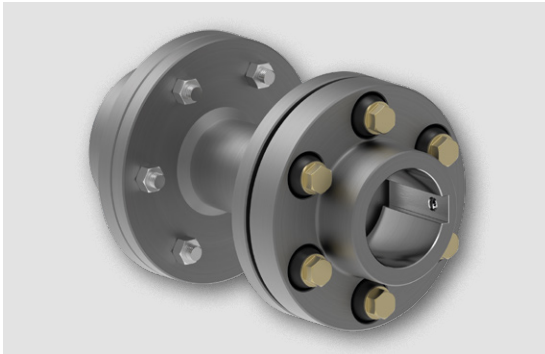


Size	TKN			n _{max}	Bore Diameter			D ₁	D ₂	D ₃	C ₁	G	L ₁	Gw	J	Max. Misalignment		
	Rubber	Polyurethane	H-Trans		Min.	Max.										ΔK _a	ΔK _r	ΔK _w
						d ₁ /d ₂	d ₁											
RLB	Nm	Nm	Nm	1/min	mm	mm	mm	mm	mm	mm	mm	mm	mm	kg	kg-m ²	mm	mm	°
105	95	143	239	7200	11	30	32	105	48	50	45	2-6	94	2	0.0030	2	0.3	1
116	143	215	358	6100	12	39	42	116	60	68	45	2-6	94	2.6	0.0050	2	0.3	1
125	162	244	406	5500	14	45	50	125	68	78	50	2-6	104	3.1	0.0070	2	0.4	1
144	315	473	788	4900	18	50	60	144	82	91	55	2-6	114	4.3	0.012	2	0.4	1
162	525	788	1313	4500	22	60	65	162	89	100	60	2-6	124	7.5	0.030	2	0.4	1
178	640	960	1600	3800	24	70	75	178	105	115	70	2-6	144	10	0.040	2	0.5	1
198	1241	1862	3104	3400	28	80	90	198	124	135	80	2-6	164	13	0.062	2	0.5	1
228	2005	3008	5013	3000	28	90	100	228	133	146	90	4-10	187	18	0.100	3	0.6	1
252	3056	4584	7639	2700	38	105	115	252	156	167	100	4-10	207	24	0.17	3	0.6	1
285	4584	6875	11459	2400	48	115	125	285	170	186	110	4-10	227	35	0.31	3	0.7	1
320	6112	9167	15279	2100	55	125	135	320	196	212	125	4-10	257	51	0.53	3	0.7	1
360	8881	13321	22202	1900	65	135	150	360	212	232	140	4-12	288	73	1.02	4	0.9	1
400	12032	18048	30080	1700	75	160		410	230		160	4-12	328	101	1.70	4	1.1	1
450	18621	27932	46553	1500	85	180		450	260		180	4-12	368	137	2.90	4	1.1	0.5
500	25783	38675	64458	1350	95	200		500	290		200	4-12	408	180	4.70	4	1.1	0.4
560	31035	46553	77588	1200	95	225		560	320		220	4-8	446	278	10.70	2	1.5	0.3
630	42017	63025	105042	1050	100	250		630	355		240	4-8	486	365	17.4	2	1.5	0.3
710	74962	112443	187405	950	100	260		710	385		260	5-9	527	516	33	2	1.8	0.3
800	99981	149972	249953	850	100	280		800	420		290	5-9	587	691	53	2	1.8	0.3
900	154985	232478	387463	750	100	305		900	465		320	5-9	647	927	86	2	1.8	0.3
1000	194997	292495	487492	680	125	320		1000	515		350	5-10	708	1224	142.8	2	2.0	0.1
1120	269959	-	-	600	135	350		1120	560		380	6-11	769	1584	231	2	2.2	0.1
1250	345016	-	-	550	150	380		1250	610		420	6-11	849	2070	367.5	2	2.4	0.1
1400	529986	-	-	490	175	440		1400	700		480	6-12	969	3060	693	2	2.7	0.1
1600	750002	-	-	430	200	480		1600	770		540	6-12	1089	3960	1155	2	3.0	0.1
1800	974983	-	-	380	225	540		1800	870		600	8-16	1212	5760	2205	2	3.4	0.1
2000	1300041	-	-	340	250	600		2000	960		660	8-16	1332	7020	3255	2	3.8	0.1

To continue see next page

Pin & Bush Couplings LOVEJOY INDIA® RLB

RLB BSB: Type with Spacers



Size	TKN	n _{max}	Bore Diameter			D ₁	D ₂	D ₃	C ₁	E	G	L ₁	Gw	J	Max. Misalignment		
			Min.	Max.											ΔK _a	ΔK _r	ΔK _w
			d ₁ /d ₂	d ₁	d ₂												
RLB	Nm	1/min	mm	mm	mm	mm	mm	mm	mm	mm	mm	kg	kg·m ²	mm	mm	°	
105	95.6	7200	11	30	32	105	48	50	45	100, 140, 180	2-6	94	2.41	0.0036	2	0.3	1
116	146.4	6100	12	42	39	116	60	68	45		2-6	94	3.2	0.006	2	0.3	1
144	318.3	4900	18	60	50	144	82	91	55		2-6	114	5.2	0.014	2	0.4	1
162	525.2	4500	22	65	60	162	89	100	60		2-6	124	8.4	0.03	2	0.4	1
198	1247.8	3400	28	90	80	198	124	135	80		2-6	164	13.9	0.066	2	0.5	1
228	2049.9	3000	28	100	90	228	133	146	90		4-10	187	19.7	0.1	3	0.6	1
252	3068.5	2700	38	115	105	252	156	167	100		4-10	207	25.8	0.18	3	0.6	1
285	4551.8	2400	48	125	125	285	170	186	110		4-10	227	37.7	0.33	3	0.7	1
320	6098.8	2100	55	135	135	320	196	212	125	4-10	257	53.6	0.55	3	0.7	1	
360	8899.9	1900	65	135	135	360	212	232	140	140, 180	4-12	288	93.4	1.29	4	0.9	1

To continue see next page

Pin & Bush Couplings LOVEJOY INDIA® RLB

Spare Parts						
Coupling SIZE	Pin Hub Part No.	Bush Hub Part No.	Pin + Washer Part No.	Bush Part No.	No. Of Pin-Bush Assy./Coupling	Nut Size
RB-105	RB-105-3/1	RB-105-3/2	RB/P-2	RB/B-2	3	M8
RB-116	RB-116-4/1	RB-116-4/2	RB/P-2	RB/B-2	4	M8
RB-125	RB-125-4/1	RB-125-4/2	RB/P-2	RB/B-2	4	M8
RB-144	RB-144-6/1	RB-144-6/2	RB/P-2	RB/B-2	6	M8
RB-162	RB-162-6/1	RB-162-6/2	RB/P-3	RB/B-3	6	M10
RB-178	RB-178-6/1	RB-178-6/2	RB/P-3	RB/B-3	6	M10
RB-198	RB-198-10/1	RB-198-10/2	RB/P-3	RB/B-3	10	M10
RB-228	RB-228-11/1	RB-228-11/2	RB/P-4	RB/B-4	11	M14
RB-252	RB-252-12/1	RB-252-12/2	RB/P-4	RB/B-4	12	M14
RB-285	RB-285-11/1	RB-285-11/2	RB/P-5	RB/B-5	11	M16
RB-320	RB-320-12/1	RB-320-12/2	RB/P-5	RB/B-5	12	M16
RB-360	RB-360-11/1	RB-360-11/2	RB/P-6	RB/B-6	11	M20
RB-400	RB-400-10		RB/P-7	RB/B-7	10	M20
RB-450	RB-450-12		RB/P-7	RB/B-7	12	M20
RB-500	RB-500-14		RB/P-7	RB/B-7	14	M20
RB-560	RB-560-10		RB/P-8	RB/B-8	10	M36
RB-630	RB-630-12		RB/P-8	RB/B-8	12	M36
RB-710	RB-710-12		RB/P-9	RB/B-9	12	M42
RB-800	RB-800-14		RB/P-9	RB/B-9	14	M42
RB-900	RB-900-16		RB/P-9	RB/B-9	16	M42
RB-1000	RB-1000-18		RB/P-9	RB/B-9	18	M42

To continue see next page

Pin & Bush Couplings LOVEJOY INDIA® RLB

Explanations

T_{KN} = Nom. Transmissible Torque	C_1 = Guided Length in Bore	J = Approx. Moment of Inertia
n_{max} = Max. Rotational Speed	E = Distance Between Shaft Ends	ΔK_a = Max. Permissible Axial Misalignment
d_1/d_2 = Bore Diameter Hubs	G = Width of Gap Between Components	ΔK_r = Max. Permissible Radial Misalignment
D_1 = Max. Outer Diameter	L_1/L_2 = Total Length	ΔK_w = Max. Permissible Angular Misalignment
D_2/D_3 = Outer Diameter Hubs	G_w = Approx. Weight	

Technical Information

- All dimensions are in millimeters, unless otherwise specified. Decimal points are used as decimal separators.
- For vertical installation, please contact RINGFEDER POWER TRANSMISSION.
- For other types of shaft-hub-connections, please contact RINGFEDER POWER TRANSMISSION.
- If you need detailed information about torque transmission, please contact RINGFEDER POWER TRANSMISSION.
- Please contact RINGFEDER POWER TRANSMISSION for maximum bore with square key.
- Weight "Gw" and Moment of Inertia "J" are given at maximum bore diameter.
- For the dimension L_2 , calculate "2 x C_1 + E".
- "GJL" is used as standard hub material. Optional materials are "GJS" and "steel".

Ordering example RLB without Spacer

Series	Type	Size	Elastomer	Bore Diameter d_1	Bore Diameter d_2
RLB	BWB	320	RUB	90	120

Ordering example RLB with Spacer

Series	Type	Size	Elastomer	Distance Between Shaft Ends E	Bore Diameter d_1	Bore Diameter d_2
RLB	BSB	228	PU	E140	80	65

Ordering Information

- Use letter "W" in the type, for RLB without Spacer.
Use letter "S" in the type, for RLB with Spacer.
- Choose from the following Elastomer Materials: RUB = Rubber, PU = Polyurethane, HTR = H-Trans
- Without further specifications, we deliver as standard: Bore tolerance H7; Keyway acc. to DIN 6885-1; Keyway width tolerance JS9; Set screw per hub. For bores complying with AGMA or other specifications, please contact RINGFEDER POWER TRANSMISSION.

Disclaimer of liability

All technical details and notes are non-binding and cannot be used as a basis for legal claims. The user is obligated to determine whether the represented products meet his requirements. We reserve the right to carry out modifications at any time in the interests of technical progress.