

GEAR-FLEX COUPLINGS TYPE LFG/LHG



CONSTRUCTION

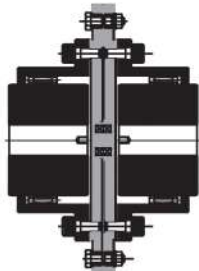
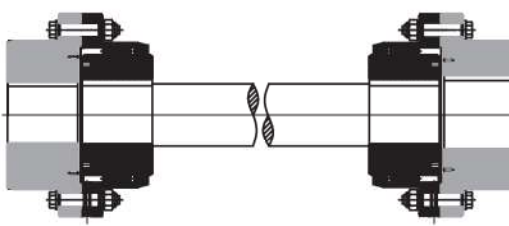
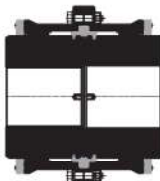
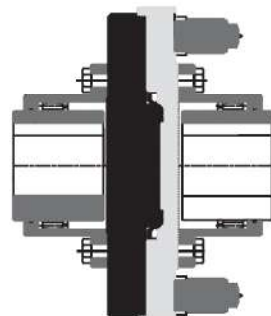
Full gear type LFG Lovejoy Flexible Gear Coupling consists of two identical toothed hubs, two identical flanged sleeves with internal teeth, a gasket, a set of bolts, nuts and lock washers, lube plugs and two oil / grease retaining seals over the hubs.

NOMENCLATURE

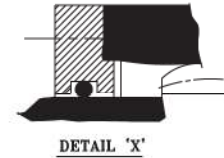
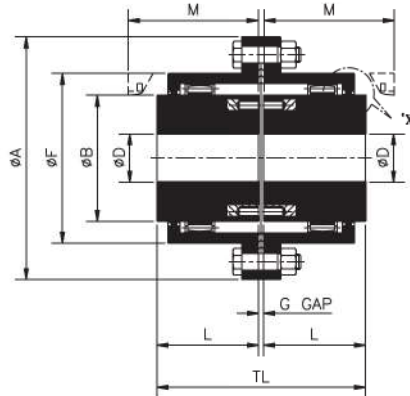
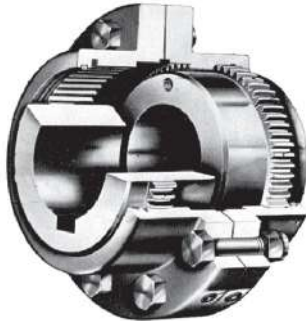
- 1) HUB
- 2) SLEEVE
- 3) BOLT
- 4) NUT
- 5) GASKET
- 6) O-RING



SPECIAL DESIGN VARIANTS GEAR-FLEX COUPLINGS

 <p style="text-align: center;">Gear Coupling with Shear Pin</p>	 <p style="text-align: center;">Gear Coupling with Floating Shaft</p>
 <p style="text-align: center;">Gear Coupling with Limited End Float</p>	 <p style="text-align: center;">Gear Coupling with Torque Limiter</p>

GEAR-FLEX COUPLINGS TYPE LFG



THIS COVER PLATE CONSTRUCTION FOR
SIZES LFG - 111 ONWARDS

FULL FLEXIBLE TYPE LFG

FEATURES

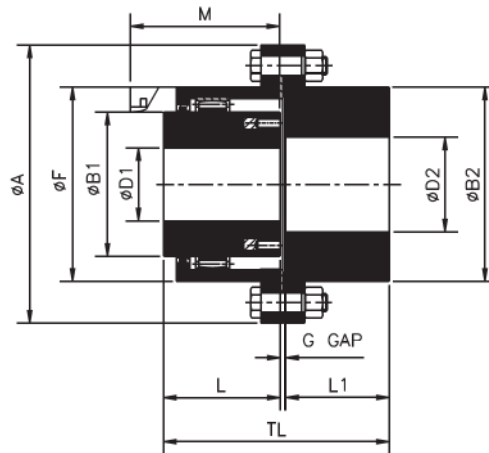
Standard full flexible gear coupling TYPE LFG accommodates angular & parallel misalignments or a combination of both as well as axial misalignment (end float). Ideal for all horizontal, close coupled applications including fans, overhead cranes, conveyors, steel & paper mill equipments. One or both the hubs can be easily reversed for more than normal shafts separation applications.

TECHNICAL DATA

Size	kW at 100 rpm	Rated Torque Nm	Max. rpm	Bore ØD		ØA	L	ØB	ØF	M	G	TL	#	
				PB	Max.								Wt. kg	M.I.(WR ²) kg-m ²
LFG-100	6	559	7600	13	35	120	45	50	75	54	3	93	4.1	0.006
LFG-101	12	1127	6730	14	50	170	55	65	110	67	5	115	10.6	0.029
LFG-102	29	2804	6150	20	65	185	70	85	125	83	5	145	15.4	0.046
LFG-103	53	5047	5200	30	80	220	85	105	150	103	5	175	26.0	0.110
LFG-104	100	9557	4580	40	100	250	105	130	175	124	5	215	40.0	0.213
LFG-105	153	14605	3950	46	115	290	110	155	200	136	10	230	60.0	0.445
LFG-106	235	22444	3550	50	125	320	125	175	230	152	10	260	84.0	0.745
LFG-107	412	39303	3270	60	145	350	140	205	260	174	10	290	113.4	1.21
LFG-108	529	50472	3015	70	165	380	155	230	290	187	10	320	158.0	2.04
LFG-109	658	62821	2650	80	190	430	165	250	330	196	10	340	210.0	3.46
LFG-110	963	91923	2330	100	230	490	180	310	390	216	10	370	290.0	5.55
LFG-111	1289	123065	2100	110	260	545	200	350	445	245	10	410	545.0	15.25
LFG-112	1723	164516	1940	150	300	590	240	400	490	289	10	490	716.0	24.30
LFG-113	2908	277694	1600	160	330	680	260	440	555	312	15	535	984.0	43.21
LFG-114	4019	383786	1500	200	370	730	280	500	610	341	15	575	1219.0	64.84
LFG-115	4812	459512	1400	230	410	780	320	540	660	385	15	655	1566.0	97.30
LFG-116	7028	671165	1200	260	455	900	350	625	755	423	20	720	2246.0	183.66
LFG-117	9997	954665	1100	300	520	1000	400	720	855	489	20	820	3260.0	338.05
LFG-118	13236	1263938	1000	320	620	1100	450	810	950	533	20	920	4680.0	600.41
LFG-119	17454	1666744	900	300	710	1250	485	910	1050	559	30	1000	6283.0	955.96

- All dimensions are in mm unless otherwise specified.
- Spacer couplings, Brake drum, Brake disc, Shear pin, Floating shaft couplings are available.
- For vertical installation contact RATHI.
- # Weight & Moment of Inertia are at pilot bore.
- Consult RATHI for Max Bore with Square Key.
- Max. bores specified above are for uniformly loaded drives only with single rectangular keyway. For other than uniform loads please consult Rathi.

GEAR-FLEX COUPLINGS TYPE LHG



HALF FLEXIBLE TYPE LHG

FEATURES

- Standard half flexible gear coupling TYPE LHG cannot accommodate parallel misalignment.
- Used primarily with floating shaft assemblies. Extensively used for cross traverse and long travel line shaft drives.

TECHNICAL DATA

Size	kW at 100 rpm	Rated Torque Nm	Max. rpm	Bore			ØA	ØB1	ØB2	ØF	G	L	L1	M	TL	#	
				PB	Max.											Wt. kg	M.I. (WR ²) kg-m ²
					ØD1	ØD2											
LHG-100	6	559	7600	13	35	45	120	50	65	75	3	45	45	54	93	4.2	0.006
LHG-101	12	1127	6730	14	50	60	170	65	85	110	5	55	55	67	115	10.1	0.027
LHG-102	29	2804	6150	20	65	75	185	85	110	125	5	70	70	83	145	15.2	0.045
LHG-103	53	5047	5200	30	80	90	220	105	130	150	5	85	85	103	175	25.3	0.106
LHG-104	100	9557	4580	40	100	110	250	130	160	175	5	105	105	124	215	40.4	0.211
LHG-105	153	14605	3950	46	115	130	290	155	185	200	10	110	110	136	230	60.4	0.440
LHG-106	235	22444	3550	50	125	150	320	175	215	230	10	125	125	152	260	85.5	0.747
LHG-107	412	39303	3270	60	145	170	350	205	240	260	10	140	140	174	290	115.0	1.20
LHG-108	529	50472	3015	70	165	200	380	230	285	290	10	155	155	187	320	164.3	2.10
LHG-109	658	62821	2650	80	190	220	430	250	315	330	10	165	165	196	340	216.7	3.52
LHG-110	963	91923	2330	100	230	260	490	310	370	390	10	180	180	216	370	317.0	6.86

- All dimensions are in mm unless otherwise specified.
- Spacer couplings, Brake drum, Brake disc, Shear pin, Floating shaft couplings are available.
- For vertical installation contact RATHI.
- # Weight & Moment of Inertia are at pilot bore.
- Consult RATHI for Max Bore with Square Key.
- Max. bores specified above are for uniformly loaded drives only with single rectangular keyway. For other than uniform loads please consult Rathi.